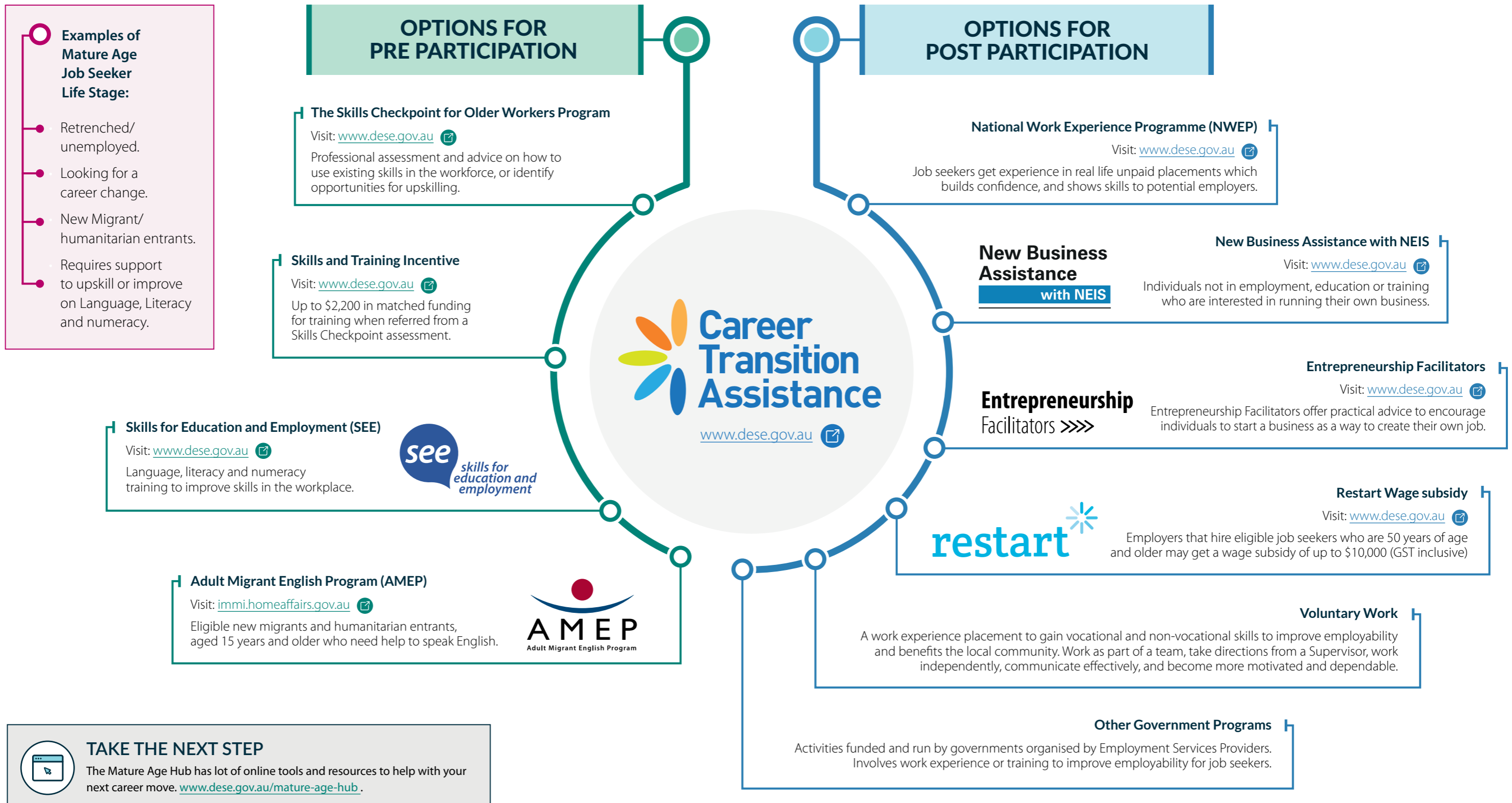


Career Transition Assistance (CTA) helps mature age job seekers, aged 45 years and older, to increase their employability and become more competitive in the labour market. There are other support programs you might want to do before you begin CTA. After you've completed your CTA course there are programs to help build on what you've learnt. Listed below are some options.



TAKE THE NEXT STEP

The Mature Age Hub has lot of online tools and resources to help with your next career move. www.dese.gov.au/mature-age-hub.