

1

Find out what you need to do so we can balance your Child Care Subsidy.

2

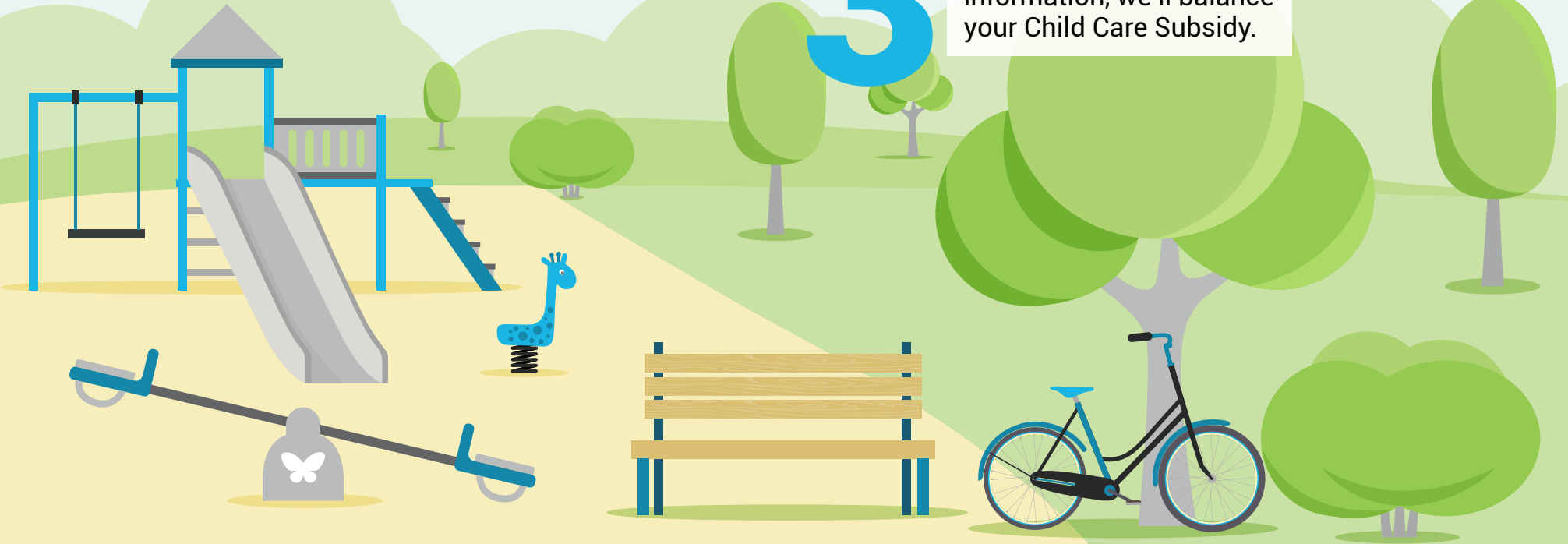
You and your partner will need to lodge a tax return, or tell us you don't need to, even if you've already told the ATO.

4

You just need to wait. There's no need to call or do anything else.

3

Once we have all the information, we'll balance your Child Care Subsidy.



servicesaustralia.gov.au/ccsbalancing