

Slide 1



Labour market conditions in
East Gippsland
October 2013

Presenter: Chris Sainsbury
Director, Labour Market Research and Analysis Branch

East Gippsland ESA



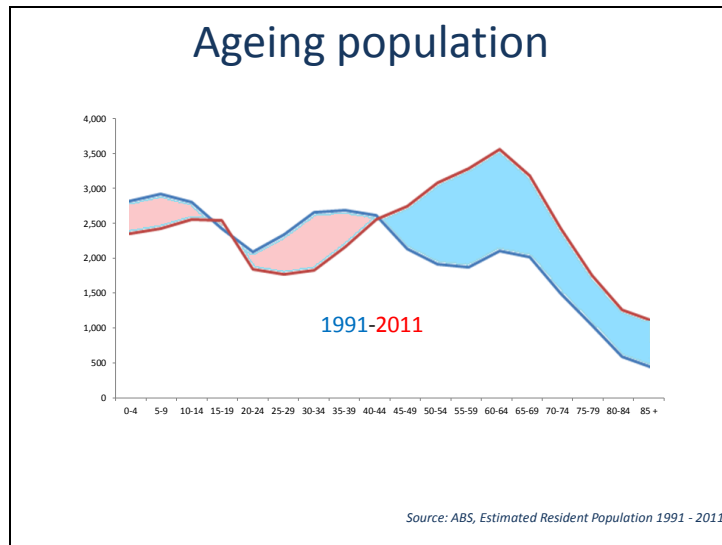
Slide 3

Population Profile

Region	Adult Population (15+ years) 2012	Growth 2007 to 2012	Median Age 2011
Wellington	34,400	5%	41
East Gippsland	35,700	6%	47
Victoria	4,599,000	10%	37

Source: ABS, Estimated Resident Population, 2007 and 2012

Slide 4



Ageing population with young adults leaving the area

Source: ABS, Estimated Resident Population 1991 – 2011

This graph illustrates the change in the age distribution of the population in East Gippsland from 1991 to 2011. The change reflects a marked growth in population aged 45+ years and a decline in young adults, particularly those aged between 20 and 44 years.

Similar demographic patterns exist in some other regional areas and are due in part to young adults moving to major urban centres while those of retirement age being more likely to remain within the region.

People moving from East Gippsland over five years to 2011

4,090 people of 15+ years moved away from East Gippsland over the 5 years to 2011.

Age breakup of the people that moved away

15 – 24 year olds	33%
25 – 34 year olds	17%
35 – 44 year olds	12%
45 – 54 year olds	11%
55 – 64 year olds	11%
65+ year olds	16%

Where did they go?

1210 moved interstate

1570 moved to Melbourne

1310 moved elsewhere in Victoria

29% or almost 1 in 3 persons aged 15-24 in 2011 who had resided in East Gippsland LGA in 2006 lived elsewhere in 2011.

15 to 24 year olds who have moved away between 2006 and 2011 to:

	Number	% studying
Melbourne	660	60%
Elsewhere in Australia (15 to 24 years)	1,050	60%

Slide 5

Gippsland internet vacancies continue to grow

12 months to September 2013

Region	Yearly % change	Number of vacancies (September 2013)
Gippsland	1.7%	1,060
Victoria	-7.1%	41,550

Source: DEEWR Vacancy Report, September 2013 (three month moving average)

Slide 6

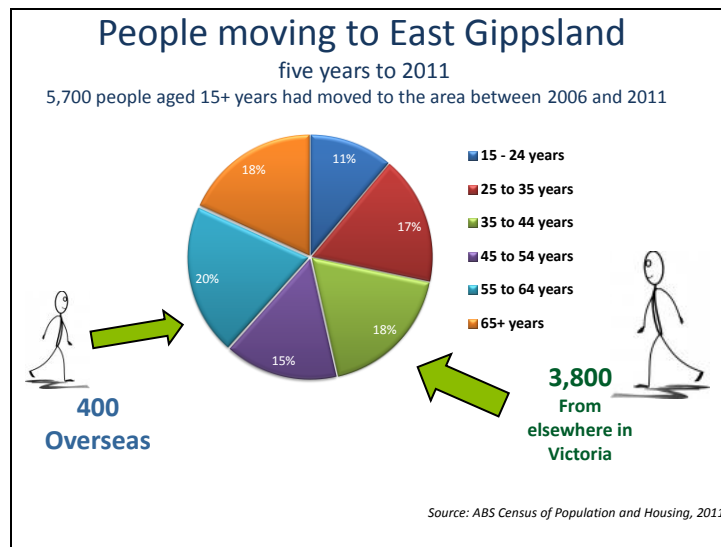
Unemployment defying state and national trends

Region	Unemployment Rate		Annual Change
	June 2012	June 2013	
Bairnsdale SLA	5.2%	4.7%	-0.5% pts
Orbost SLA	6.6%	6.0%	-0.6% pts
South-West SLA	5.3%	4.7%	-0.6% pts
East Gippsland LGA	5.4%	4.9%	-0.5% pts
Victoria (September, seasonally adjusted)	5.4%	5.7%	0.3% pts
Australia (September, seasonally adjusted)	5.2%	5.6%	0.4% pts

Source: Department of Education Small Area Labour Markets, June 2013 (smoothed);
ABS Labour Force, September 2013 (seasonally adjusted)

Long-term Unemployment <i>All Gippsland LFR</i>			
Region	Long-term unemployed (52 weeks or more)		Average duration of unemployment
	Persons	Per cent of all unemployed	
All Gippsland LFR	1,230	19.9%	47 weeks
Victoria	30,400	17.5%	34 weeks

Source: ABS Labour Force Data September 2013, 12 month averages of original data



People moving to East Gippsland

Source: ABS Census of Population and Housing, 2011; Department of Immigration <http://www.immi.gov.au/settlementn> and Citizenship. Settlement reporting, October 2008 to October 2013

5,700 people (aged 15 + years in 2011) had moved to East Gippsland between (2006 and 2011).*

3,800 came from elsewhere in Victoria

1,500 people had moved into East Gippsland from interstate

NSW	590
Queensland	420
South Australia	60
Western Australia	200
Tasmania	70
Northern Territory	110
ACT	80

400 came from overseas

**Note: 2,100 people (aged 15 + years) living in East Gippsland did not report or adequately define where they lived in 2006 in the 2011 Census so were excluded from these figures.*

Employed persons who moved to East Gippsland between 2006 and 2011, proportion employed in each major occupation category:

Managers	15%
Professionals	22%
Technicians and Trades Workers	14%
Community and Personal Service Workers	13%
Clerical and Administrative Workers	11%
Sales Workers	9%
Machinery Operators and Drivers	4%
Labourers	12%

Recent arrivals more likely to be unemployed

Lived in 2006	Unemployment Rate	Participation Rate
East Gippsland	4.3%	54.2%
Elsewhere	10.2%	56.6%
Overseas	8.1%	68.0%
Melbourne	10.4%	55.0%
Elsewhere in Victoria	9.4%	56.9%
Interstate	10.8%	55.4%

Source: ABS Census of Population and Housing, 2011

Recent arrivals more likely to be unemployed

Source: ABS Census of Population and Housing, 2011

Highest educational attainment for working age population (15-64 years in 2011) who had moved to East Gippsland from 2006 to 2011

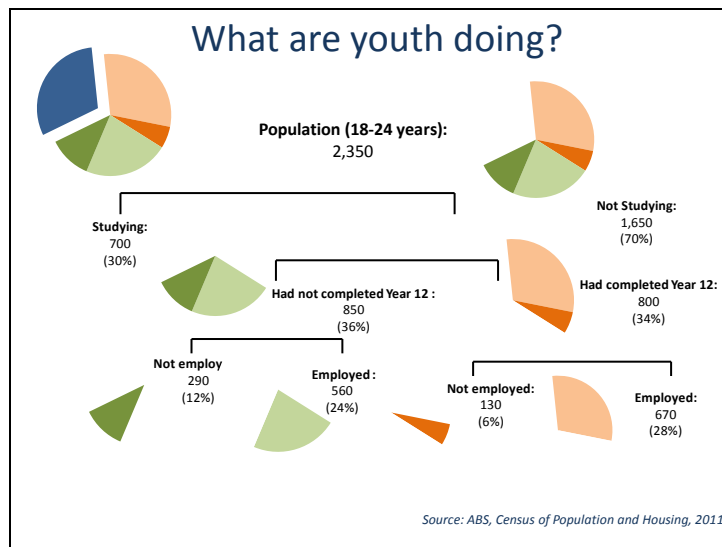
	Bachelor or higher	Unemployment rate	Participation rate
15-24	11%	5.8%	88.1%
25-34	33%	6.0%	92.9%
35-44	26%	1.4%	82.5%
45-54	16%	0.0%	81.3%
55-64	18%	9.7%	58.9%
Total	21%	<u>4.5%</u>	81.4%

	Advanced Diploma, Diploma or Certificate iii and IV	Unemployment rate	Participation rate
15-24	18%	19.8%	79.4%
25-34	33%	7.2%	78.0%
35-44	35%	6.2%	79.9%
45-54	40%	9.6%	81.1%
55-64	29%	6.3%	48.5%
Total	32%	<u>8.5%</u>	72.8%

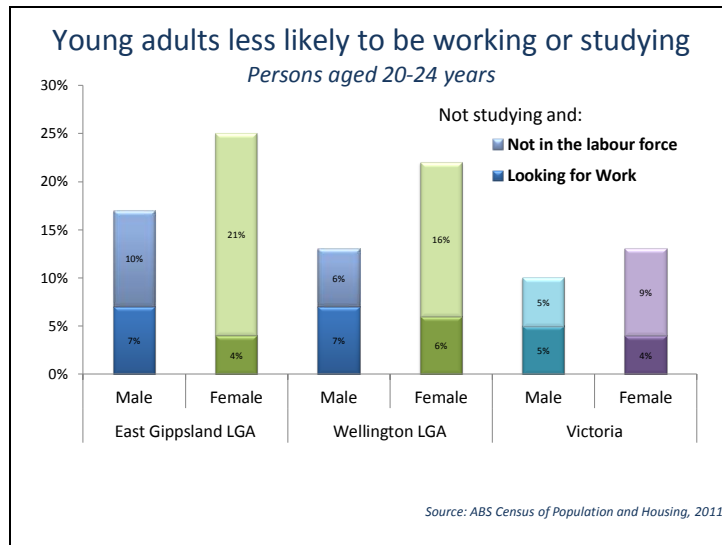
	Year 12	Unemployment Rate	Participation Rate
15-24	15%	6.7%	64.5%
25-34	14%	8.9%	70.6%
35-44	12%	4.8%	69.4%
45-54	5%	17.9%	84.8%
55-64	10%	25.0%	42.3%
Total	11%	<u>10.7%</u>	64.7%

	Below Year 12	Unemployment Rate	Participation Rate
15-24	51%	21.5%	48.5%
25-34	14%	24.7%	61.6%
35-44	23%	18.4%	69.4%
45-54	34%	12.3%	69.6%
55-64	40%	12.0%	34.7%
Total	31%	<u>16.8%</u>	53.3%

Almost 1/3 of new arrivals did not complete year 12.



Slide 11



Slide 12

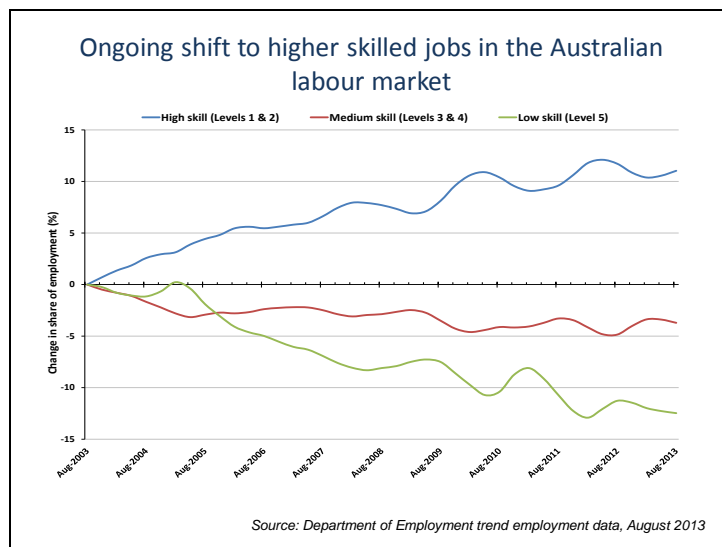
Educational attainment				
Persons aged 25-34 years				
Region	Completed Year 12		Highest Non-School Qualification	
	2011	2006	Advanced Diploma, Diploma or Certificate III & IV	Bachelor Degree or Higher
Bairnsdale	57%	53%	40%	16%
Orbost	57%	52%	33%	18%
South-West	54%	51%	43%	18%
East Gippsland	57%	53%	39%	17%
Victoria	79%	73%	29%	40%
Australia	75%	69%	30%	35%

Source: ABS Census of Population and Housing, 2011

Educational attainment, persons aged 25 – 34 years

Source: ABS Census of Population and Housing, 2011

Year 12 completion for persons aged 25 – 34 years increased by 4 percentage points to 57 per cent in the 5 years to 2011.



Ongoing shift to higher skilled jobs in the Australian labour market

Source: Department of Employment trend employment data, August 2013

Shift to higher skilled jobs

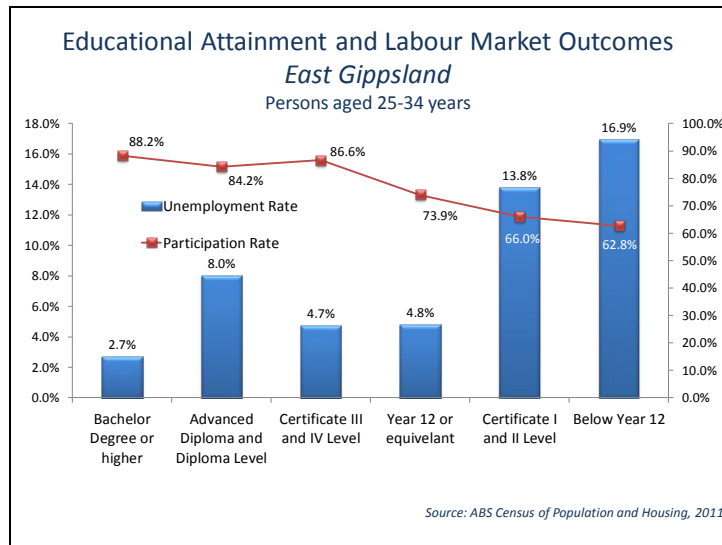
The attainment of educational qualifications remains important given the strong past and projected growth of higher skilled occupations, as well as the lower unemployment rates recorded for people with higher qualifications.

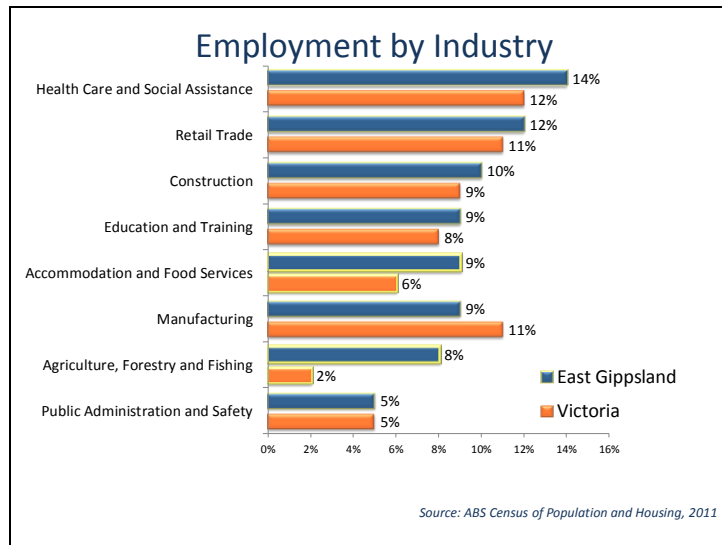
Looking over the 10 year period from August 2003 to August 2013, it is clear that jobs at the higher skill levels (Skill Level 1, commensurate with a Bachelor degree or higher qualification and Skill Level 2, commensurate with an Associate Degree, Advanced Diploma or Diploma)) are increasing as a proportion of overall employment – up from 37.0 per cent to 41.1 per cent. At the same time, jobs at the lowest skill level (Skill Level 5, commensurate with compulsory secondary education or a Certificate I) are diminishing as a proportion of total employment from 19.9 per cent to 17.5 per cent.

What this means for school leavers is that yes, you may get a job when you leave school, **BUT** you may not experience the same employment stability or earn as much as those students whose education choices set them up for a career, rather than a series of low skilled jobs.

The key technical and trade group at skill level 3, corresponding to a Certificate IV or a formal apprenticeship, is declining as a share of employment, but growth rates vary considerably within this category.

Note: This chart plots the percentage change in the percentage shares of employment from August 2003 onward. Source: ABS Labour Force Survey data to August 2013, seasonally adjusted and trended by the Department of Employment.





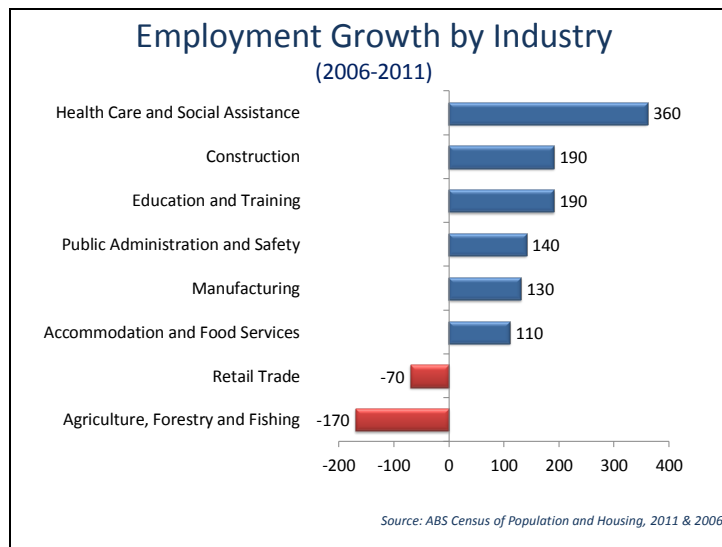
Employment by Industry

Source: ABS Census of Population and Housing, 2011

Industry employment demonstrates the relative importance of agriculture and tourism

Industry change 2001-2011

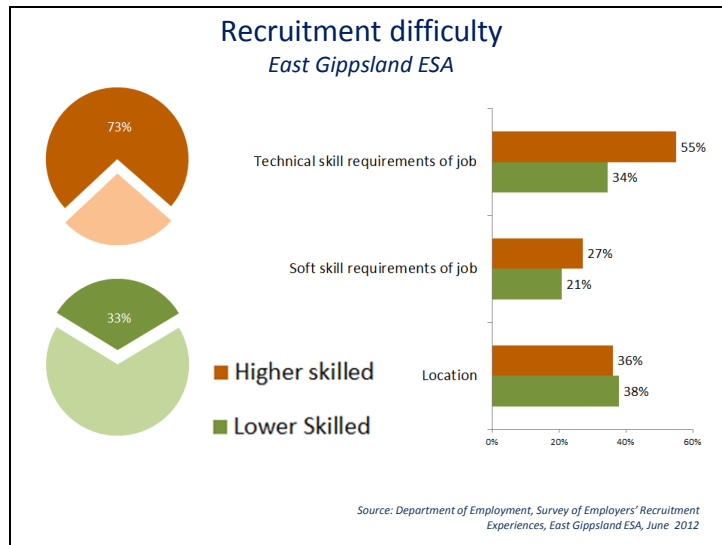
	% of total employment	
	2001	2011
Health Care and Social Assistance	12%	14%
Retail Trade	17%	12%
Construction	7%	10%
Education and Training	9%	9%
Accommodation and Food Services	8%	9%
Manufacturing	10%	9%
Agriculture, Forestry and Fishing	13%	8%
Public Administration and Safety	3%	5%



Employment growth by Industry

Source: ABS Census of Population and Housing, 2011 and 2006; Source: Department of Education Industry Projections, five years to 2016/17

TOTAL GROWTH = 1,200 jobs in the 5 years to 2011



Recruitment difficulty

Source: Department of Employment, Survey of Employers' Recruitment Experiences, East Gippsland ESA, June 2012

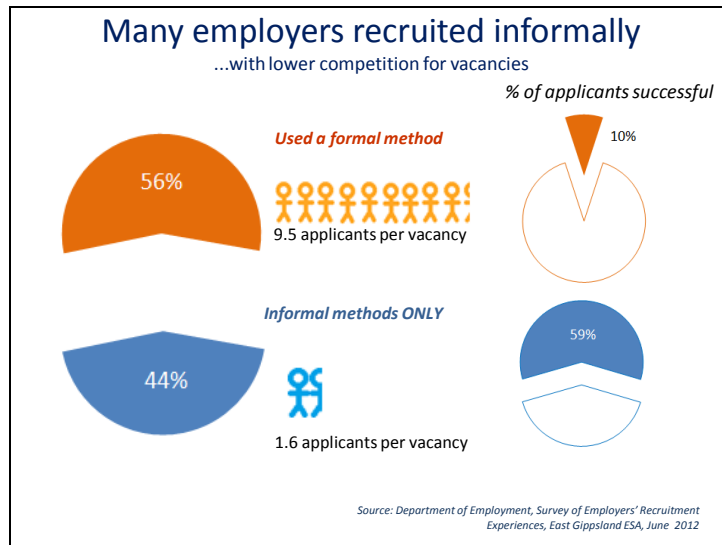
Occupations most commonly reported by employers as being difficult to fill vacancies for in the Gippsland ESA include:

Bachelor Degree or higher Vet Qualifications

- Chef
- Advertising and Marketing Professionals
- Electricians
- Motor Mechanics
- Architectural, Building and Surveying Technicians

Lower Skilled

- Cooks
- Gaming Workers



Basic employability skills

Most importance placed on:

- 30% personal traits and qualities only
- 28% technical skills only
- 41% both equally important

Personal traits and qualities applicants lacked:

- Enthusiasm
- Motivation
- Communication
- Confidence
- Teamwork

Source: Department of Education, Survey of Employers' Recruitment Experiences, All regions surveyed in the 12 months to December 2010

Conclusion

- Region outperforming Victoria overall
- Disadvantaged groups
 - Long-term unemployed, youth, less educated
- Ongoing structural shifts
 - Ageing population
 - Growing market of higher skilled jobs
 - Growth in Health sector
- Job seekers need to be job ready
 - Employability skills a must
- Stakeholders need to work together

Further Information

- www.employment.gov.au/lmip
- www.employment.gov.au/SkillShortages
- www.employment.gov.au/regionalreports
- www.employment.gov.au/australianjobs
- www.joboutlook.gov.au

Further Information

More information on labour market conditions and other research on small areas can be found on these web sites

- www.employment.gov.au/lmip
- www.employment.gov.au/skillshortages
- www.employment.gov.au/regionalreports
- www.employment.gov.au/australianjobs
- www.joboutlook.gov.au

Thank you.



If you have any questions about the presentation please
contact the Regional and Industry Employer Surveys section
on
[1800 059 439](tel:1800059439) or email
recruitmentsurveys@DepartmentofEmployment.gov.au



Australian Government
Department of Employment